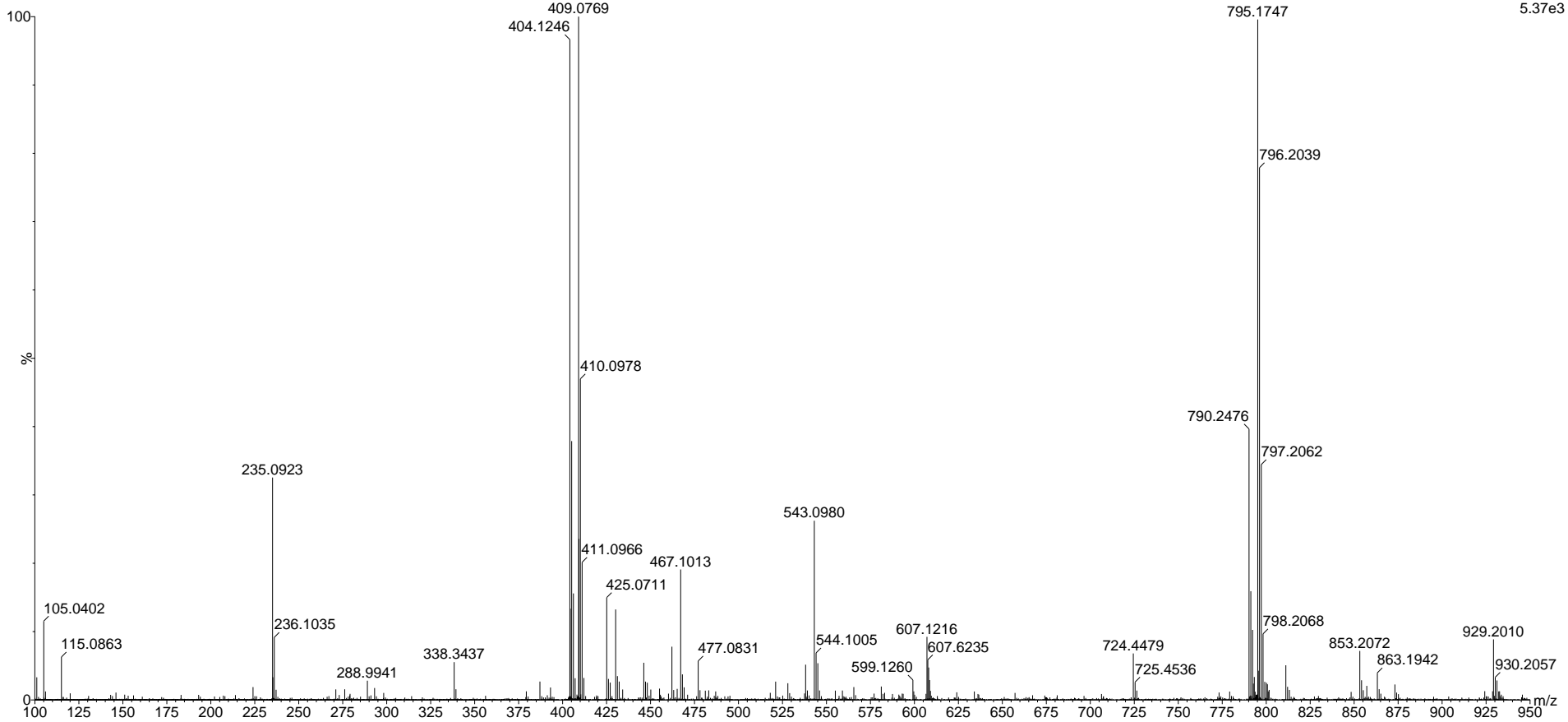


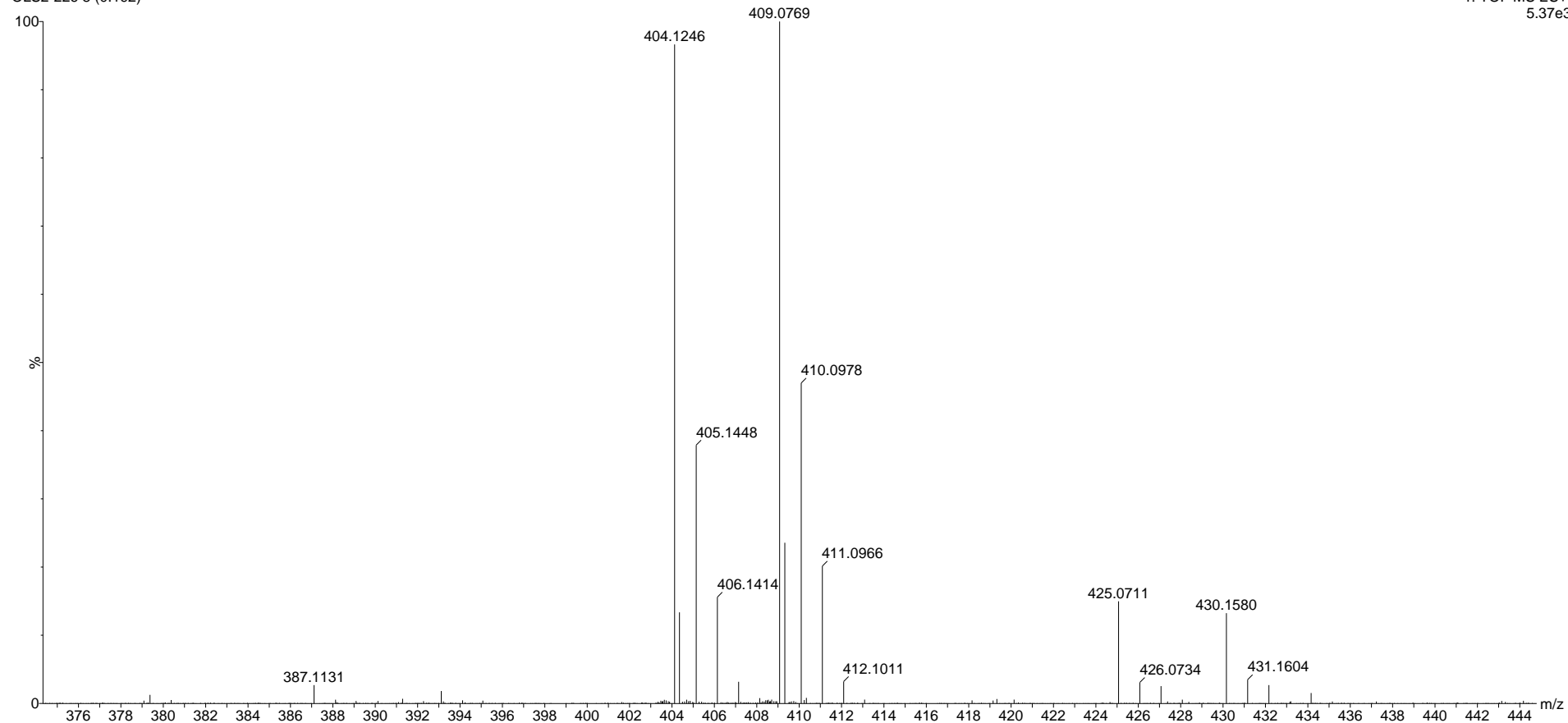
OLS2-226
OLS2-226 8 (0.192)

14-Mar-2024
1: TOF MS ES+
5.37e3



OLS2-226
OLS2-226 8 (0.192)

14-Mar-2024
1: TOF MS ES+
5.37e3



Elemental Composition Report for [M+H]⁺

Single Mass Analysis

Tolerance = 5.5 PPM / DBE: min = -1.5, max = 100.0

Element prediction: Off

Number of isotope peaks used for i-FIT = 3

Monoisotopic Mass, Even Electron Ions

42 formula(e) evaluated with 1 results within limits (all results (up to 1000) for each mass)

Elements Used:

C: 1-40 H: 0-80 O: 1-10 S: 1-1

Minimum: -1.5

Maximum: 5.0 5.5 100.0

Mass	Calc. Mass	mDa	PPM	DBE	i-FIT	i-FIT (Norm)	Formula
387.1131	387.1114	1.7	4.4	6.5	73.4	0.0	C17 H23 O8 S

[M+NH4]⁺ 404m/z